

THE
**BERKELEY
SQUARE**
ESTATE



FLAT 1, 20 BRUTON PLACE
MAYFAIR LONDON W1

913 SQ FT (85 SQ M) LET

An impressive first floor luxury two bedroom apartment with the benefit of comfort cooling and under floor heating which has been finished to the most exacting standards and incorporates cutting edge finishes throughout, to give prospective tenants a comfortable, modern living environment finished with quality new contemporary furnishings.



FLAT 1, 20 BRUTON PLACE

MAYFAIR LONDON W1

LET

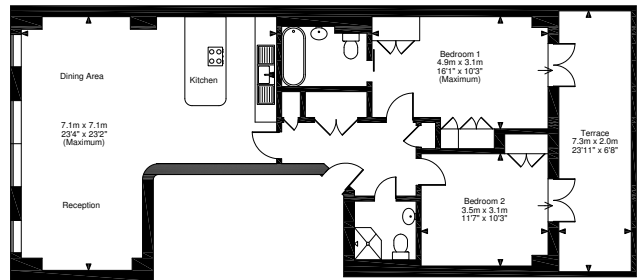


LOCATION

Bruton Place is a vibrant mews enclave with a mixture of quality restaurants and chic boutiques, located in the heart of Mayfair off the north east of Berkeley Square.

The property is within close proximity to high end fashion retailers on Bond Street, Bruton Street and Mount Street and has excellent transport links including Green Park and Bond Street underground stations

FLOOR PLAN



Floor plan not to scale. For indicative purposes only

RENT

Upon application.



Alastair Mercer

enquiries@mercerpasqua.co.uk

020 7665 6633



We wish to advise prospective purchasers that these sale particulars are believed to be correct, but their accuracy is in no way guaranteed, nor do they form part of any contract. We have not carried out a detailed survey nor tested the services, appliances or specific fittings.

May 2013

taylorreid design +44 (0) 20 7355 2500